



SERVICE BULLETIN

No. 380

Piper Aircraft Corporation

Lock Haven, Pennsylvania, U.S.A.

"FAA DOA EA-1 Approved"

July 9, 1973

Subject: Revised Pitch Servo Bridle Cable Installation

Models Affected: The following aircraft with AltiMatic V and AltiMatic V Flight Director Automated Flight Control System installations only:
PA-23-250 (Six Place) Aztec

Serial Numbers Affected:
27-4426, 27-4575 to 27-7305019 incl., 27-7305021 to 27-7305029 incl., 27-7305031 to 27-7305036 incl., 27-7305038, 27-7305039, 27-7305042, 27-7305043, 27-7305047 and 27-7305052.

Compliance Time: Within the next fifty (50) hours of operation.

Purpose: The pitch servo bridle cable installation on recent production versions of the above referenced aircraft model has been revised. This revision requires a specified number of wraps of the bridle cable on the pitch servo capstan.

This service release provides instructions to inspect and revise, if necessary, the pitch servo bridle cable installation on the above referenced aircraft according to the sketch/instruction sheet on the reverse side of this service release.

Instructions: Refer to sketch/instruction sheet on reverse side of this service release.

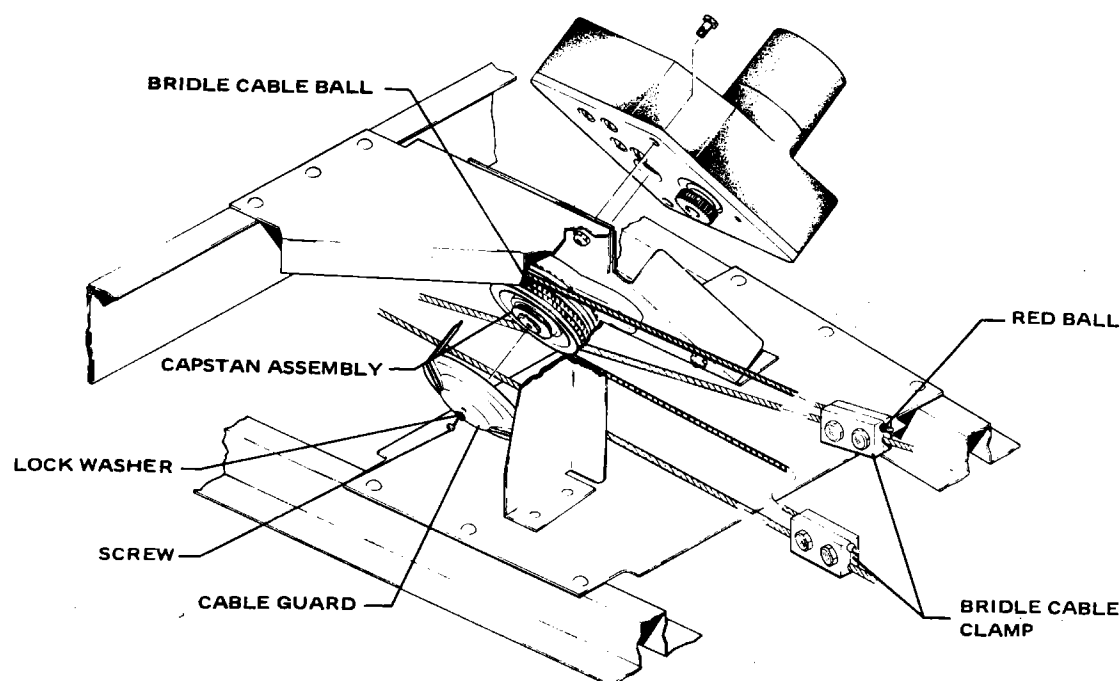
Material Required: Not applicable.

Availability of Parts: Not applicable.

Effectivity Date: This Service Bulletin is effective July 27, 1973.

Summary: Please contact your Piper Dealer to make arrangements for compliance with this service release as specified in the Compliance Time section, above. One (1) hour labor allowance is available free of charge through your Piper Dealer providing the modification is performed by a Piper Dealer.

A Service Publication Compliance form is enclosed with copies of this Service Bulletin being mailed to owners/operators of the above referenced aircraft. Following compliance with the provisions of this Service Bulletin, this form must be filled out per instructions on reverse side of the form bottom copy and left with the Piper Dealer performing the modification.



INSTRUCTIONS

1. Refer to the AltiMatic V and AltiMatic V-1 Service Manual (P/N 761 525) or the AltiMatic V F/D and AltiMatic V F/D-1 Service Manual (P/N 761 526) to gain access to the Pitch Servo.
2. Ascertain the number of turns of the bridle cable around the pitch servo capstan. If the bridle cable is wrapped one (1) turn clockwise and one and one half (1 1/2) turns counterclockwise from ball on capstan, no further action is required. If installation is not in this configuration, proceed with step 3.
3. Remove cable guard from capstan assembly.
4. Remove bridle cable clamp from lower stabilator control cable.
5. Wrap free end of bridle cable one more turn counterclockwise on the capstan.
6. Attach bridle cable to lower stabilator control cable with bridle cable clamp previously removed.
7. With control wheel in neutral position, as defined in the Aztec Service Manual (P/N 753 564), loosen both bridle cable clamps so they slide on the control cables with some friction.
8. Rotate capstan as required to align the bridle cable ball in the capstan slot as shown in above sketch. Verify bridle cable is wrapped one turn clockwise and one and one half turns counterclockwise from ball on capstan.
9. Adjust control cable and bridle cable tension in accordance with the Pitch Servo Capstan Assembly Installation Instructions in the appropriate V Series Service Manual.
10. Check for clearance of bridle cable clamps by moving the control wheel throughout its total travel and verify bridle cable is properly wrapped on the capstan as shown in above sketch.
11. Install cable guard and secure.
12. Check servo operation in accordance with the V Series Service Manual.
13. Install all panels previously removed and secure.